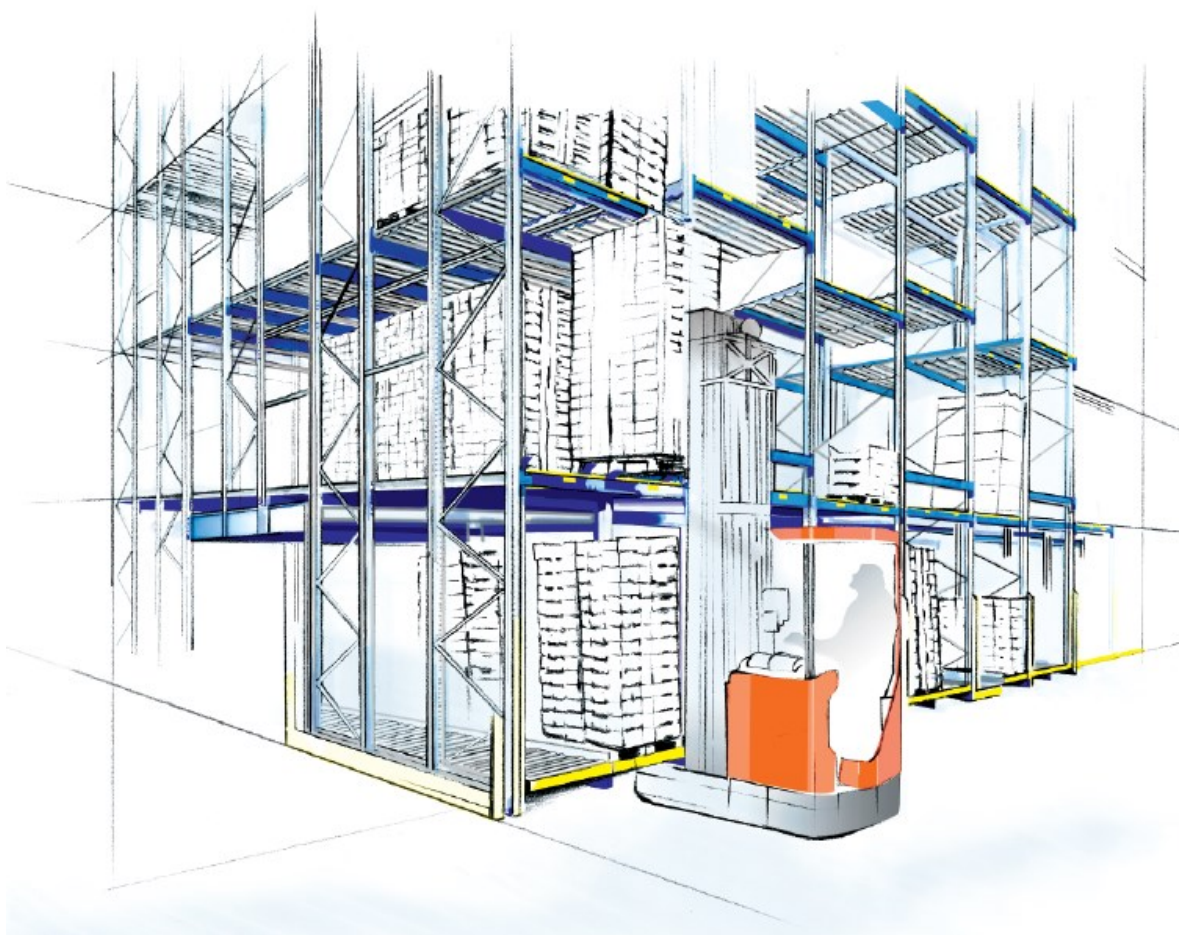


Euroroll Cart Push Back Datasheet

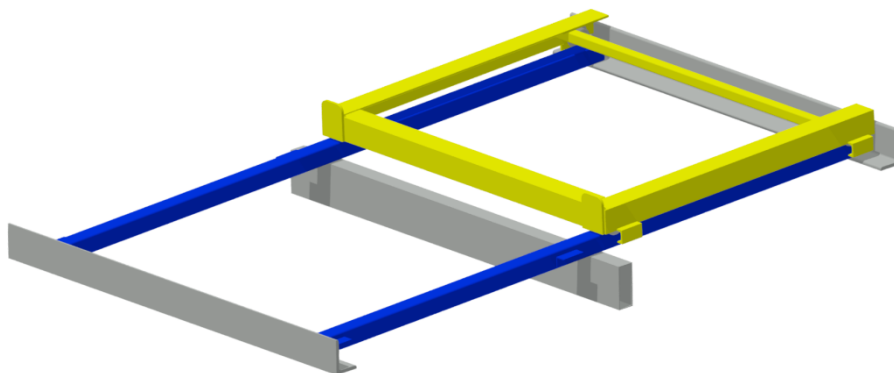


HIVATALOS MAGYARORSZÁGI FORGALMAZÓ

 **LAUNE**

info@laune.hu | www.laune.hu

euroroll
.....



**Cart Push Back System
for storage of 2 pallets deep**

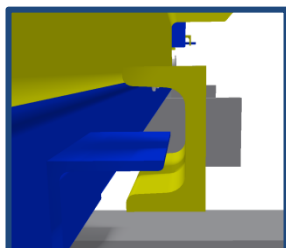
Criteria	Euro Pallet DIN / EN 15146 1200mmx 800mm	Industrial Pallet (EUR3) DIN 15146 1200mm x 1000mm	UK Chep Pallet B1210A 1200mm x 1000mm	US Pallet GMA 1020mmx 1220mm	Comment
Direction of transport: (in depth)	800mm	1000mm	1: 1000mm 2: 1200mm	1220mm	
System depth min. in mm.: (overall depth of rack)	1700mm	2100mm	1: 2100mm 2: 2500mm	2540mm	Rails = depth of pallet x 2 + 100 mm
System width max. in mm.:	1160mm	1160mm	1: 1160mm 2: 960mm	1180mm	Widest trolley= Pallet width -40mm
System height in mm.: 1: end stop 2: first cart	1: 154mm 2: 138mm	1: 154mm 2: 138mm	1: 154mm 2: 138mm	1: 154mm 2: 138mm	measured from underside of rail
Total System weight in kg:	42kg	48kg	1: 48kg 2: 53kg	56kg	

Further requirements:

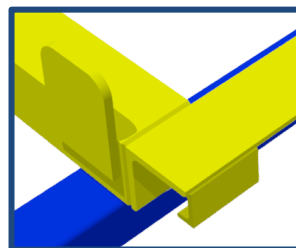
- First beam must be an angle beam
- The last beam can be an angle beam or a box beam
- Special pallets, not shown here, inquire separately
- The recommended slope of the system is 3%
- The maximum pallet weight is 1300kg as standard



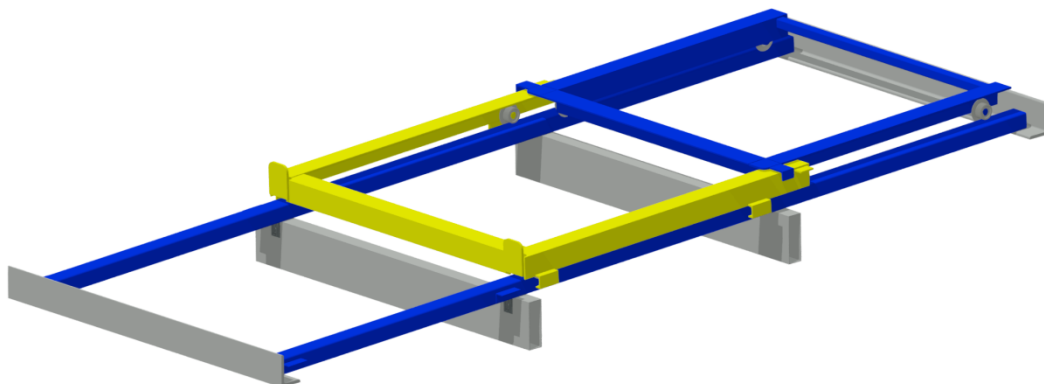
System Picture



Lift Out Protection



Multi Purpose Plate



**Cart Push Back System
for storage of 3 pallets deep**

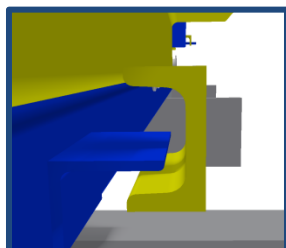
Criteria	Euro Pallet DIN / EN 15146 1200mm x 800mm	Industrial Pallet (EUR3) DIN 15146 1200mm x 1000mm	UK Chep Pallet B1210A 1200mm x 1000mm	US Pallet GMA 1020mm x 1220mm	Comment
Direction of transport: (in depth)	800mm	1000mm	1: 1000mm 2: 1200mm	1220mm	
System depth min. in mm.: (overall depth of rack):	2550mm	3150mm	1: 3150mm 2: 3750mm	3810mm	Rails = depth of pallet x 3 + 150 mm
System width max. in mm.:	1180mm	1180mm	1: 1180mm 2: 980mm	1200mm	Widest trolley= Pallet width -20mm
System height in mm.: 1: end stop 2: first cart	1: 164mm 2: 151mm	1: 164mm 2: 151mm	1: 164mm 2: 151mm	1: 164mm 2: 151mm	measured from underside of rail
Total System weight in kg:	76kg	87kg	1: 87kg 2: 96kg	100kg	

Further requirements:

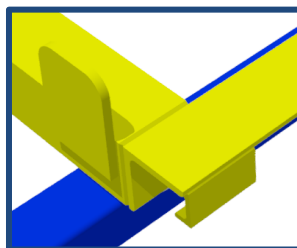
- First beam must be an angle beam
- The last beam can be an angle beam or a box beam
- Special pallets, not shown here, inquire separately
- The recommended slope of the system is 3%
- The maximum pallet weight is 1300kg as standard



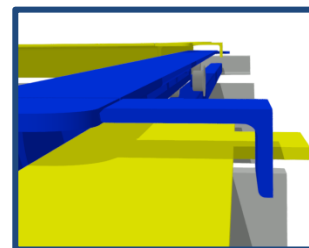
System Picture



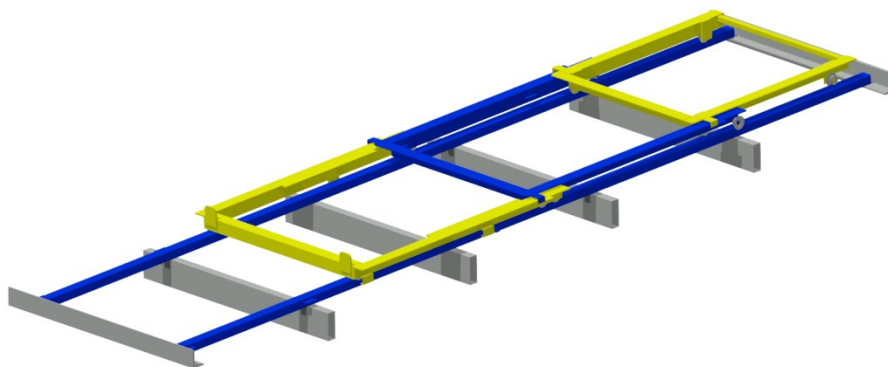
Lift Out Protection



Multi Purpose Plate



Anti Spread Prevention



Cart Push Back System for storage of 4 pallets deep

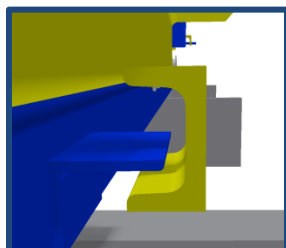
Criteria	Euro Pallet DIN / EN 15146 1200mm x 800mm	Industrial Pallet (EUR3) DIN 15146 1200mm x 1000mm	UK Chep Pallet B1210A 1200mm x 1000mm	US Pallet GMA 1020mm x 1220mm	Comment
Direction of transport: (in depth)	800mm	1000mm	1: 1000mm 2: 1200mm	1220mm	
System depth min. in mm.: (overall depth of rack):	3400mm	4200mm	1: 4200mm 2: 5000mm	5080mm	Rails = depth of pallet x 4 + 200 mm
System width max. in mm.:	1307mm	1307mm	1: 1307mm 2: 1107mm	1327mm	Widest trolley= Pallet width +107mm
System height in mm.: 1: end stop 2: first cart	1: 189mm 1: 176mm	1: 189mm 1: 176mm	1: 189mm 2: 176mm	1: 189mm 1: 176mm	measured from underside of rail
Total System weight in kg:	118kg	135kg	1: 135kg 2: 145kg	153kg	

Further requirements:

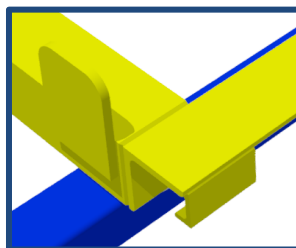
- First beam must be an angle beam
- The last beam can be an angle beam or a box beam
- Special pallets, not shown here, inquire separately
- The recommended slope of the system is 3%
- The maximum pallet weight is 1300kg as standard



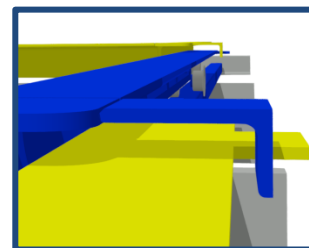
System Picture



Lift Out Protection



Multi Purpose Plate



Anti Spread Prevention